



## Add power and functionality to Citrix Web Interface and Microsoft TS Web Access

visionapp Workspace Management (vWWM) enhances Citrix Web Interface, organizing a user's applications and resources into a customizable, easy-to-use Workspace. The Workspace delivers applications of all kinds into a single web page – that looks and acts the same no matter where users are or what machine they're on. vWWM increases user productivity and lowers help desk costs.



### Through visionapp Workspace Management you can access:

- > Citrix XenApp Published Applications
- > Microsoft RemoteApps
- > Citrix streamed apps
- > Microsoft AppV/SoftGrid
- > Web apps
- > Local apps
- > Hosted desktops (Citrix XenDesktop, etc.)
- > Central files
- > Much more

### Increase user productivity and lower help desk costs

With the consistent user experience and navigation of vWWM, employees know what to expect every time they log in. This reduces access problems, so users get more done, and admins spend less time on the help desk. Through vWWM's wizard-driven installation, you can get the portal up and running in about an hour, and your users can start working with their resources right away.

### Key Benefits

- > Deliver a wide range of application types to your users through a browser-based desktop
- > End users have a consistent experience independent of the device and the application type
- > Granular user management through comprehensive permissions management and rule-based controls
- > High availability and scalability through vWWM's modular architecture
- > Highly customizable through easy-to-use admin and user interfaces and controls
- > Add integration and expand functionality through comprehensive API
- > Support multiple languages

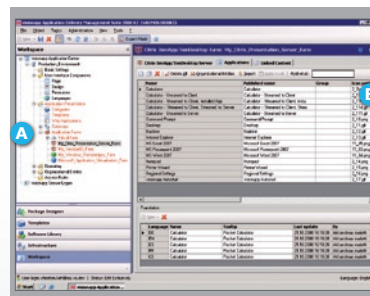


### User Interface

- 1. Application Access**  
Access all your applications through icons, sorted by categories and user preference
- 2. Navigation**  
Customize your start page, ICA client and language
- 3. Calendar**  
Directly access your calendar on your front page
- 4. Direct File Access**  
Open centralized files without RDP/ICA client
- 5. Upload**  
Upload files into predefined directories on the server



- 6. Newsticker**  
Role-based information dispatch without starting a RDP/Citrix session
- 7. Citrix Workspace**  
Define Connect, Disconnect or Re-Connect directly through the portal
- 8. Web Favorites**  
Manage important internal or external web pages



- A:**
- Basic Configurations**  
Centrally configure load distribution and portal options
  - User Interface**  
Manage the user interfaces design/content elements and language definitions
  - Application Presentation**  
Define application categories and import WTS/Citrix farms; Provide templates for the application start

### Administration Interface



- Operation**  
Create user news according to roles and sites; access user information and protocols
- Sites**  
Create, configure and manage different sites
- Access Rules/Authentication**  
Safeguard application access based on rules and authentication mechanisms
- B:**
- Application Selection**  
Select published applications for categorization and presentation within the user interface

### Personalize and customize

Users can arrange their applications and resources, choose their language, and make minor modifications to their Workspace. Administrators can customize almost everything:

- > Layouts
- > Access rights
- > Multiple upload/download centers
- > Branding
- > Functionality
- > Auto-starting applications
- > And much more

### Add security to your application access

vWM can integrate with almost all authentication methods through RADIUS and RSA integration. visionapp offers a proprietary one-time password solution to add security. In addition, secure logon functionality ensures maximum security for user logons over unsecured networks. Access rules can be set based on the user's role, network, device or location.

### Go global with vWM

If you have a large, global environment with multiple sites, you can use the following enterprise-ready features of vWM:

- > Multi-lingual user interface
- > Failover capability
- > Scalability to tens of thousands of users
- > Dynamic load distribution to assure the best performance and user experience.

Out of the box, vWM supports:

- > English
- > German
- > French
- > Spanish
- > Czech
- > Easily extensible to other languages if you choose

### Notify your user

vWM provides notifications (such as planned downtime, emergency information and social events) on the user's front page. These notifications can be provided based on business unit, location, role, and more. This allows companies to provide important information in a place users are sure to see it.

### Function comparison of the three vWM versions

Functions	Standard	Advanced	Enterprise
Access to Microsoft RemoteApps and AppV applications, virtual desktops and web applications	✓	✓	✓
Microsoft TS Gateway support	✓	✓	✓
Load distribution over two web servers with central configuration and database failover	✓	✓	✓
Stateless Sessions and Service Monitoring	✓	✓	✓
Authentication: basic, integrated, form-based and RADIUS integration	✓	✓	✓
Access to Citrix Published Applications and streamed applications		✓	✓
Citrix Secure/Access Gateway support		✓	✓
Access to local applications			✓
Load distribution over any type of web servers, virtual farms, multi-site support, multi-client capability and granular access rules			✓
Extended authentication through RADIUS, certificates, multi-domain and integrated two-factor authentication			✓

For further information on the functions please request our detailed version overview.

» Using visionapp products we have been able to fully meet our requirements for secure, flexible access to applications and data. This provides our staff with a desktop that is not dependent on the end device and which, at the same time, meets our specifications on standardization and reducing cost. «

#### Thorsten Hautzel KfW

Financial Services  
Reconstruction and Development

### System requirements

- > Microsoft Windows XP, Vista, 2003 or 2008 Server operating system (English or German)
- > Access to a Microsoft SQL Server 2000, 2005 or 2008 (incl. Express Edition)
- > Microsoft .NET Framework 2.0
- > Microsoft Internet Information Server (IIS) 6.0 or 7.0
- > Mozilla Firefox, Microsoft Internet Explorer 6.0 or higher

### Web addresses

#### Product information

[www.visionapp.com/vwm](http://www.visionapp.com/vwm)

#### Training

[www.visionapp.com/training](http://www.visionapp.com/training)

#### Downloads

[www.visionapp.com/download](http://www.visionapp.com/download)

**VISIONapp**<sup>TM</sup>  
application delivery

#### Head Office (DE)

Helfmann-Park 2  
65760 Eschborn  
phone: +49-69-79583-0

#### London Office (UK)

107-111 Fleet Street  
London EC4A 2AB  
phone: +44-20-7936-9112

[info@visionapp.com](mailto:info@visionapp.com)

[www.visionapp.com](http://www.visionapp.com)