

Build and maintain stable Citrix and Microsoft environments in a fraction of the time

visionapp Server Management (vSM) automates the system builds pushed out to Citrix and Microsoft environments. Use pre-built, pre-tested, and Citrix Ready package templates of operating systems, Citrix XenApp, desktop images, hotfixes and patches, and most business applications. If you have many builds to manage, vSM can save weeks of time and effort.

Use vSM to support and/or manage:

- > Citrix XenApp servers
- > Microsoft Windows Terminal Servers
- > Corporate Windows XP and Vista clients
- > Hosted desktops (Citrix XenDesktop and others)
- > Web servers
- > Database servers
- > Standard Windows servers (file, print, etc.)
- > Citrix Provisioning Server
- > Microsoft SMS/SCCM
- > Microsoft WDS/ADS
- > Altiris Server Management
- > And more

Cut the management cost of your servers and clients

With manual processes, each system build can take up to a full day, and if you have hotfixes or updates, you must perform a complete rebuild. With vSM, use our package templates to build every component of your system. Simply add your configuration and licensing information, stack the packages, and build your system – it can take as little as 20 minutes! When you require an application update or patch, simply add the new package to the stack – your previous information can be automatically added – and click to rebuild the server or client.



Key Benefits

- > **Optimize and automate server and client installation and configuration**
- > **Quickly upgrade to new versions of OS's and Platforms (e.g. Citrix XenApp 4.5 to 5)**
- > **Follow ITIL recommendations with vSM's Release Management and auditing features**
- > **Greatly reduce disaster recovery times**
- > **Manage multiple sites**
- > **Optimized for Microsoft-/Citrix-based environments of all sizes**
- > **Integrate and customize your environment through our comprehensive API**

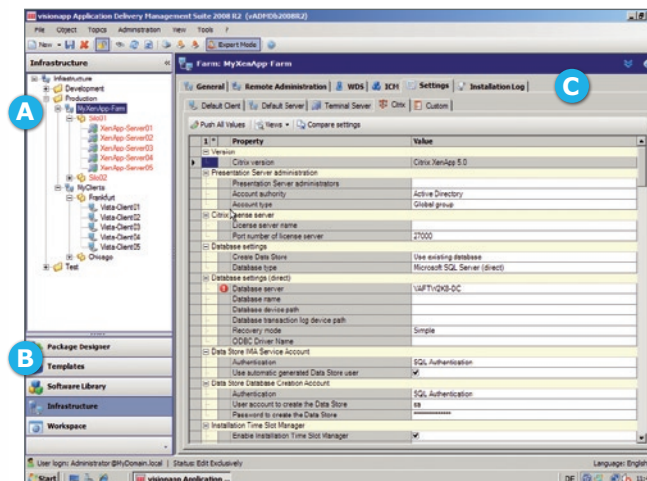
Comprehensive administration of server environments

A:

Infrastructure View
Structural view of the server/client infrastructure and the resources for ICM, Microsoft WDS/ADS/SMS, Altiris Server Management enteo OSD/NetInstall, and Provisioning Server

B:

- Templates**
Re-usable templates for managing different server/client types
- Software Library**
Resource Management for ICM, Microsoft WDS/ADS/SMS, Altiris, enteo, Provisioning Server and more
- Infrastructure**
Hierarchical management of the server/clients infrastructure
- Workspace**
Manage vVM
- Package Designer**
Create application packages for your servers and clients



C:

- General**
Information about servers/clients
- Remote Administration**
RDP, eventlog and computer management
- WDS/ADS**
Assignment of Microsoft WDS/ADS images to servers and clients
- ICM**
Assignment of scripts (installation of applications, hotfixes, patches and updates)
- Parameters**
Configuration and management of parameters for Windows Terminal Services and Citrix XenApp; additional and user-defined parameters for standard servers or clients and installation monitoring
- Protocol**
Information about the installation sequence

Implement quickly with our packaging features

More than 2,000 quality-tested package templates for common applications, operating systems, Citrix software, hotfixes and patches allow a fast, reliable environment build. With vSM, you are always up to date: you can automatically download the latest Microsoft patches, and we continually add new packages to our list. You can also add custom applications easily with our new Package Designer.

Optimize your Microsoft and Citrix environments

vSM includes specific enhancements for Microsoft and Citrix functionality. For instance, vSM allows you to manage multiple master images and schedule their usage in Citrix Provisioning Server, automatically install printers, and checks for inconsistencies.

Flexible and reliable software deployment

Identical, reproducible installations of servers and clients guarantee stable, trouble-free operation. No matter what deployment technology you use, vSM has been tailored specifically to meet these requirements.

Enforce best practices through ITIL concepts

Through the integration of ITIL concepts, vSM is one of the only software tools that enforces the best practices for change and release management, auditing, and reporting. As a result, you can meet regulatory requirements, recover previous configurations, and quickly implement a disaster recovery plan for your system.

Go global with vSM

If you have a large, global environment, you can use vSM's multi-site capability, role-based authorization, and support for multiple languages to easily build and maintain your servers and clients.

» With visionapp products, I was able to deploy a customized server environment with record stability. «

Ross Hoyt
Alameda County Superior
Courts, California
Public Sector

System requirements

- > Microsoft Windows XP, Vista, 2000, 2003 or 2008 Server operating systems (English or German)
- > For the operating system and software distribution procedures, the vendors' prerequisites apply
- > Wise Installation System 9/
Installation Studio 7.0/
Package Studio 7.0 (packaging)
- > Access to a Microsoft SQL Server 2000, 2005 or 2008 (incl. Express Edition)
- > Microsoft .NET Framework 2.0

Web addresses

Product information
www.visionapp.com/vSM

Training
www.visionapp.com/training

Downloads
www.visionapp.com/download

Function comparison of the three vSM versions

Functions	Standard	Advanced	Enterprise
Windows Server support (2003, 2008) incl. terminal services installation, configuration, administration	✓	✓	✓
Optimized installation and administration of standard, IIS and SQL servers as well as XP and Vista clients	✓	✓	✓
Integrated software distribution, packaging environment and Microsoft WDS/ADS	✓	✓	✓
Scheduled post-install	✓	✓	✓
Interfaces to Microsoft SMS, Altiris Server Management as well as Citrix Provisioning Server		✓	✓
Optimized installation, configuration and administration of Citrix XenApp environments incl. policy configuration		✓	✓
Multi-site support for distributed environments			✓
Inventory, system analysis/comparison, energy-saving function			✓
ITIL-based Change and Release Management			✓

For further information on the functions please request our detailed version overview.

VISIONapp™
application delivery

Head Office (DE)

Helfmann-Park 2
65760 Eschborn
phone: +49-69-79583-0

London Office (UK)

107-111 Fleet Street
London EC4A 2AB
phone: +44-20-7936-9112

info@visionapp.com
www.visionapp.com