



## Migrating to Citrix XenApp 5 with vSM 2008<sup>R2</sup>

### Successfully migrating to Citrix XenApp 5 with vSM 2008<sup>R2</sup>

Ensure that your migration to Citrix XenApp 5 results in a consistent, high-quality, stable Citrix farm.

#### Advantages of migrating

- > Windows Server 2008 support
- > Improved streaming applications
- > Improved graphics handling
- > Added security in Citrix Web Interface 5

#### Challenges

- > Successful migration requires consistency, enforceable quality control processes, and reporting for audit purposes
- > Upgrade can be demanding on IT staff

#### Requirements

- > Servers in the farm or a load-balancing group must remain as identical as possible.
- > Only two installation procedures that support this idea: imaging/cloning and unattended setup.

#### Integrating two best practices with vSM

visionapp's server-building software toolkit, vSM, takes the approach of combining the two processes of imaging/cloning and unattended setup with standards and enforcement.

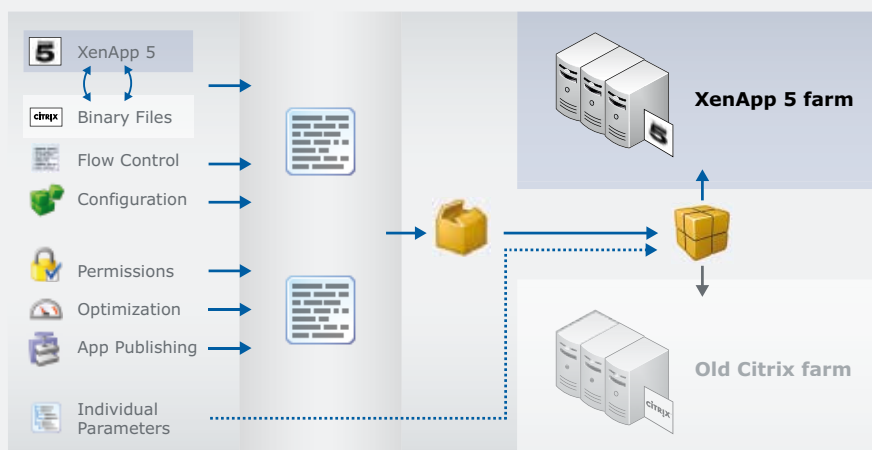
- > Provides centrally managed automation for the installation, configuration, and administration of server farms
- > Provides advantages of both imaging/cloning and Unattended Setup
- > Minimizes each method's drawbacks

#### How it works

- > Use pre-built, pre-tested, and Citrix Ready™ package templates of operating systems, Citrix XenApp/Presentation Server, Terminal Server, web server software, database server software, hotfixes and patches, and most business applications (Microsoft Office, AutoCAD, WinZip, Adobe Acrobat, etc.)

- > To migrate to Citrix XenApp 5, use the Citrix Ready XenApp 5 package template for your servers; all of the packages needed for installing, configuring and optimizing the Citrix XenApp Server are included
- > Add your configuration and licensing information, stack the packages appropriately, and build your server. In practice, a server can be completely built in as little as 20 minutes
- > To upgrade an application or apply a patch, simply add the new package to the stack—your previous configuration and licensing information can be automatically added—and click to rebuild the server
- > Manage your server environment through the intuitive GUI of vADM's administration console
- > vSM's robust Installation Control Manager has been specifically optimized for Terminal Server and Citrix Server platforms

### XenApp 5 migration with vSM



Using vSM's unique packaging methodologies, you can use the same settings and configurations for your existing Citrix farm when you upgrade to XenApp 5.

## Faster installations, more reliable server builds

vSM provides a high level of automation and the ability to enforce how each server is built. For migrating to Citrix XenApp 5, vSM 2008<sup>R2</sup> offers:

### Faster, simpler installation

Administrators don't have to perform time-consuming manual installations of individual servers. Instead, any number of servers or entire farms can be installed from a centralized console with almost complete automation and an enforced methodology.

### More reliable server builds

Manual installations are highly prone to errors, because Citrix XenApp servers must be absolutely identical. vSM assures identical builds every time.

### Increased data security

All settings, as well as the files for the entire installation, are stored on file servers or in a database. This data can be backed up and reused whenever required. If an update causes operational

problems, you can quickly rollback to a stable, tested state.

### Faster updates, changes, and maintenance

Implementing new hardware or software can be performed much faster and more easily, whether physical or virtual servers are used.

### Complete logging and reporting

vSM automatically and fully documents all installations. vSM maintains a complete history, so previous configurations can be reproduced at any time.

### Faster response times

After implementation of vSM and initial training, administrators can independently perform complex adjustments to the new system.

## Best practices for XenApp 5 migration



**When planning a migration project, take the following points into account:**

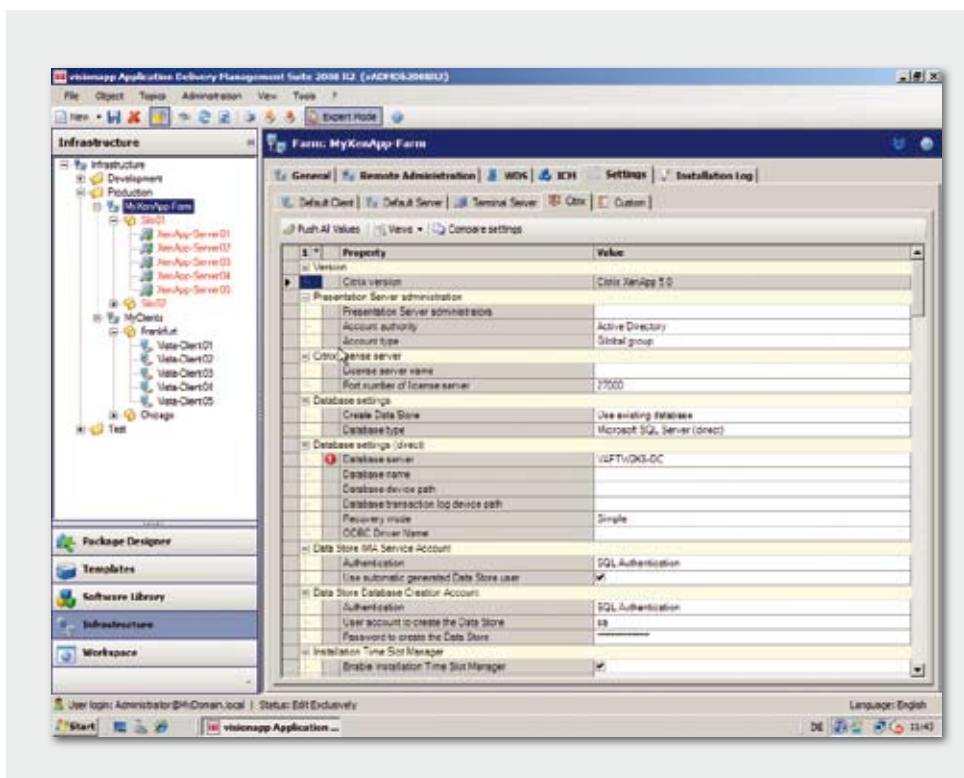
### > Server farm design

Is your existing division into farms and zones really the best solution for the company, the network or the users' needs? Sometimes, your existing structures are the result of an organically grown environment, and not of conceptual planning. A migration offers an excellent opportunity to introduce an improved concept, adapted to the current situation, as a starting point for the farm design.

### > User access during migration

During and immediately after migration, use a transition environment to make sure that users have access to the usual published applications and resources. This reduces pressure on the administrators charged with implementing the migration in as short a time as possible.

Use vSM's administration console and manage your Citrix XenApp 5 migration



**VISIONAPP**<sup>TM</sup>

### Head Office (DE)

Helfmann-Park 2  
65760 Eschborn  
phone: +49-69-79583-0

### Zürich Office (CH)

Geschäftshaus Adlikerkreuz  
Wehntalerstrasse 190  
8105 Regensdorf  
phone: +41-44-5202028

[info@visionapp.de](mailto:info@visionapp.de)

<http://software.visionapp.de>